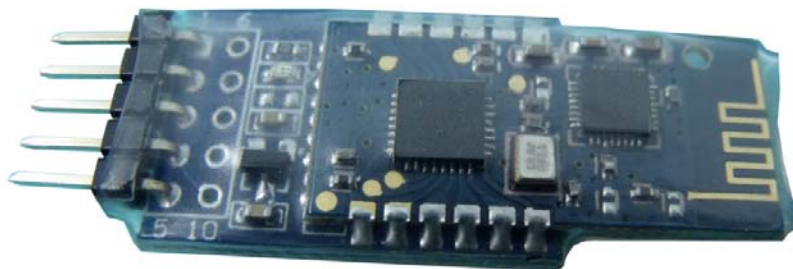


INTRODUCTION

BT-1011 Bluetooth UART Module is a serial port Bluetooth module which with 2.54mm connector, the module have onboard 3.3V LDO and link indication LED, user will be very easy to use it in the application.

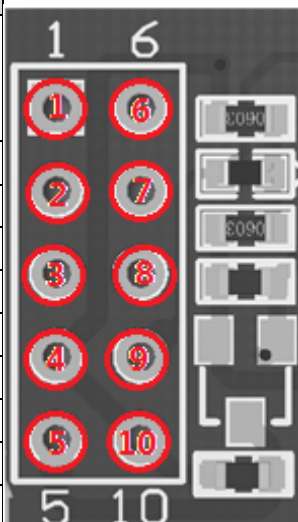


FEATURES

- Operation voltage from 3.3V to 5.5V
- Bluetooth 2.1+EDR compliant
- Support up to 3Mbps high speed UART interface
- Support AT Command

Pin out

Pin	Name	Dir	Description
1	CFG	I	Mode config pin: 0 = AT CMD Mode 1 = NORMAL Mode(Default)
2	RXD	I	UART RX , TTL-3.3V
3	TXD	O	UART TX , TTL-3.3V
4	GND	P	Ground
5	VCC	P	Power supply (3.3~5.5V)
6	---	---	N.U
7	---	---	N.U
8	---	---	N.U
9	---	---	N.U
10	---	---	N.U



Please notice:

1. Default baud rate: 9600bps
2. Pin code: 1234

AT Command

AT Command use fixed setting "9600,n,8,1"

All AT command with end character "\r\n"

No.	Function	Command	Parameter	Return
1	Test	AT	OK	None
2	Inquire BT Address	AT+LADDR	+LADDR = <PARA1>	<PARA1>: Local BT Add
3	Inquire Baud rate	AT+BAUD	+BAUD = <PARA1>	<PARA1>: Baud rate
4	Set Baud rate	AT+BAUD<PARA1>	1, +BAUD = <PARA1> OK = Set Baud rate succeed 2, <ERROR_CODE> = Failed	0=2400 , 1=4800 , 2=9600 , 3=19200 , 4=38400 , 5=57600 , 6=115200 , 7=230400 , 8=460800 , 9=921600

ERROR CODE:

- SAVE FAIL:** failed to save setting **PARA INVALID:** invalided parameter
READ FAIL: failed to reading **UNKNOWN:** unknow error

CONTACT US

540 Mill River LN San Jose,
CA95134

E-mail: support@inhaos.com

Web: www.inhaos.com