

## 1. Feature and Application

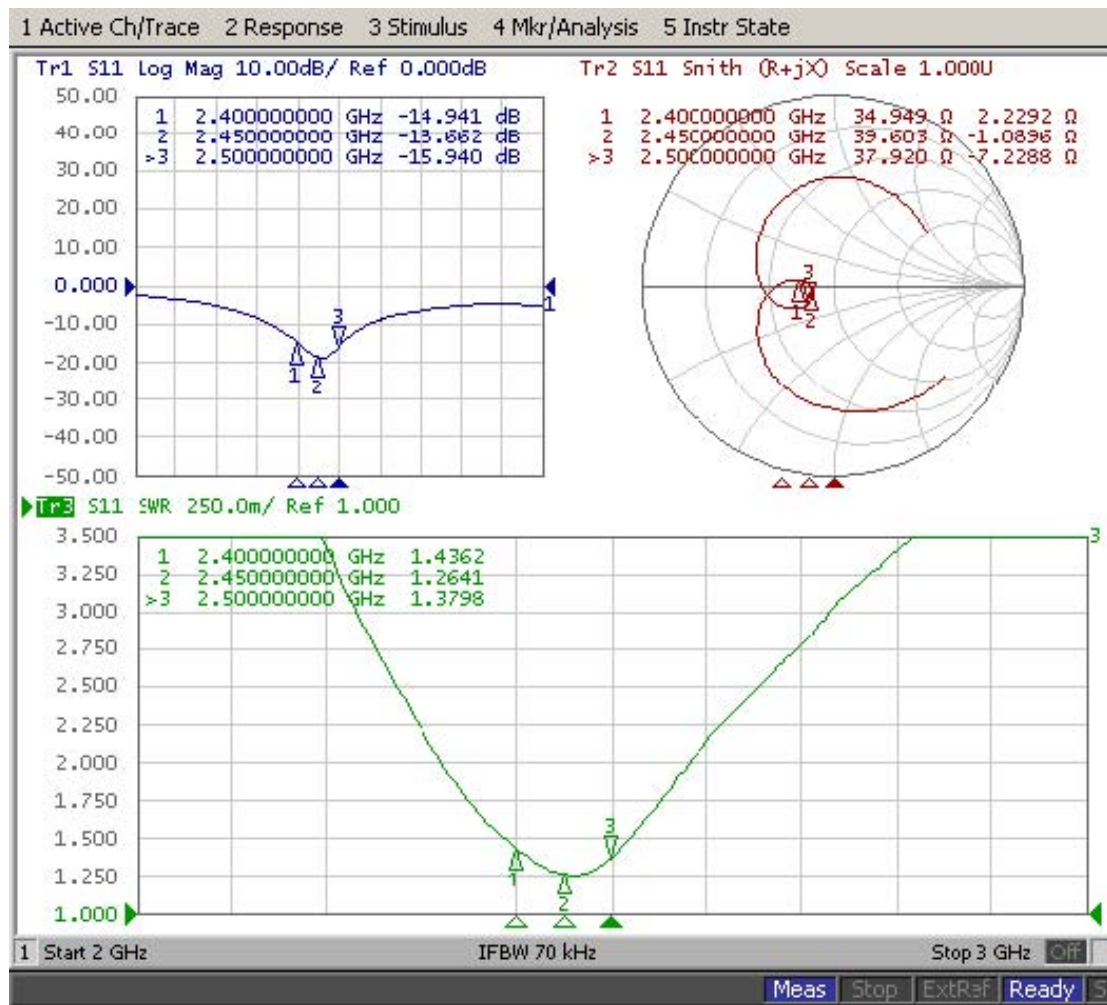
- . dipole antenna design
- . small size / high gain / omni-directional radiation pattern
- . IEEE 802.11 b / g WLAN AP (Access Point) application
- . Bluetooth / HomeRF / ISM Band and other 2.4 GHz wireless
- . communication application

## 2. Specification

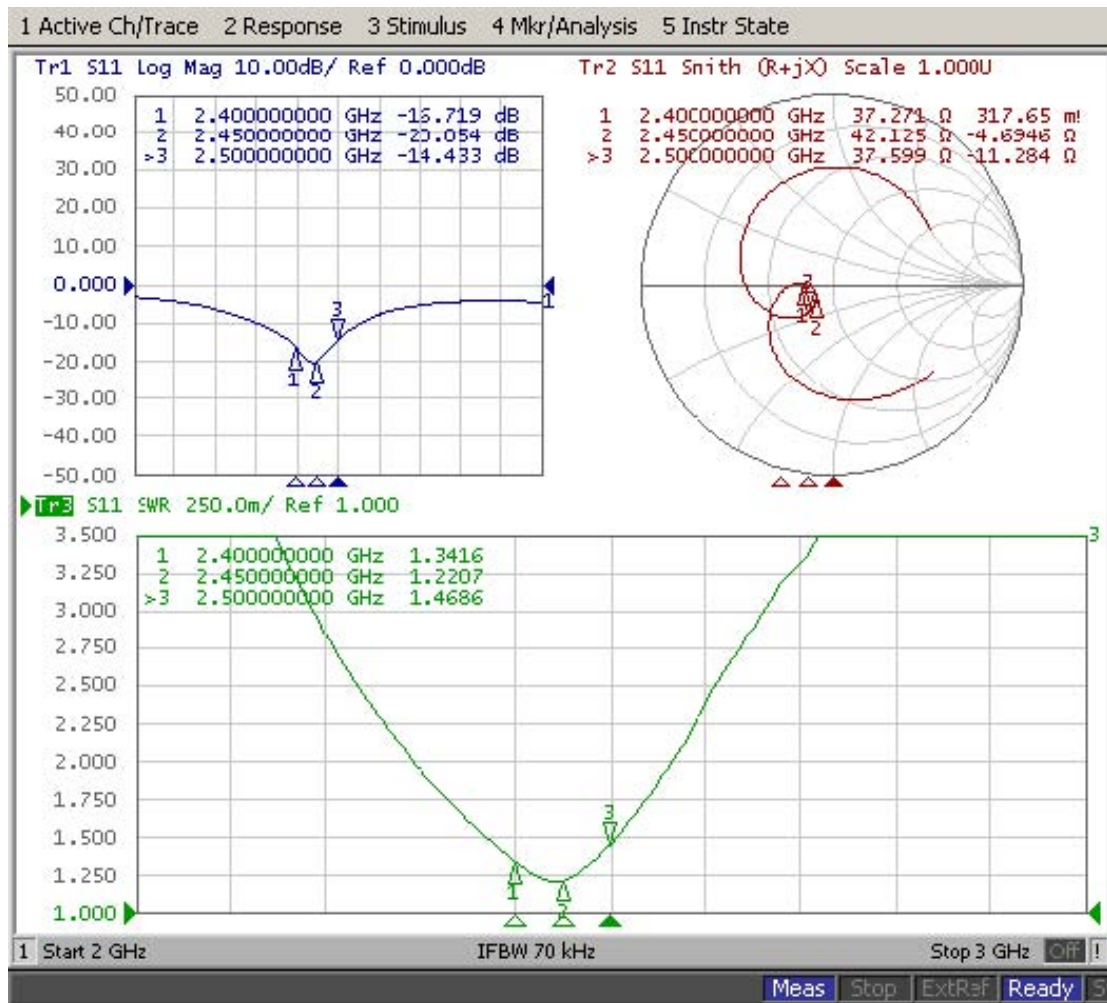
|                              |                      |
|------------------------------|----------------------|
| 1. Frequency Range           | 2400 ~ 2500 MHz      |
| 2. V.S.W.R.                  | < 2.0                |
| 3. Antenna Gain              | 5.0 dBi $\pm$ 0.5dBi |
| 4. Antenna Radiation Pattern | Omni-directional     |
| 5. Impedance                 | 50 ohm               |
| 6. Color of Outer Cover      | Black                |
| 7. Material of Outer Cover   | TPE                  |
| 8. Material of Hinge         | PC                   |
| 9. Operation Temperature     | -30°C ~ + 80 °C      |
| 10. Storage Temperature      | -30°C ~ + 80 °C      |

### 3. S11 Return Loss / S.W.R. / Impedance Testing Result

#### Antenna Hinge is 90 degree

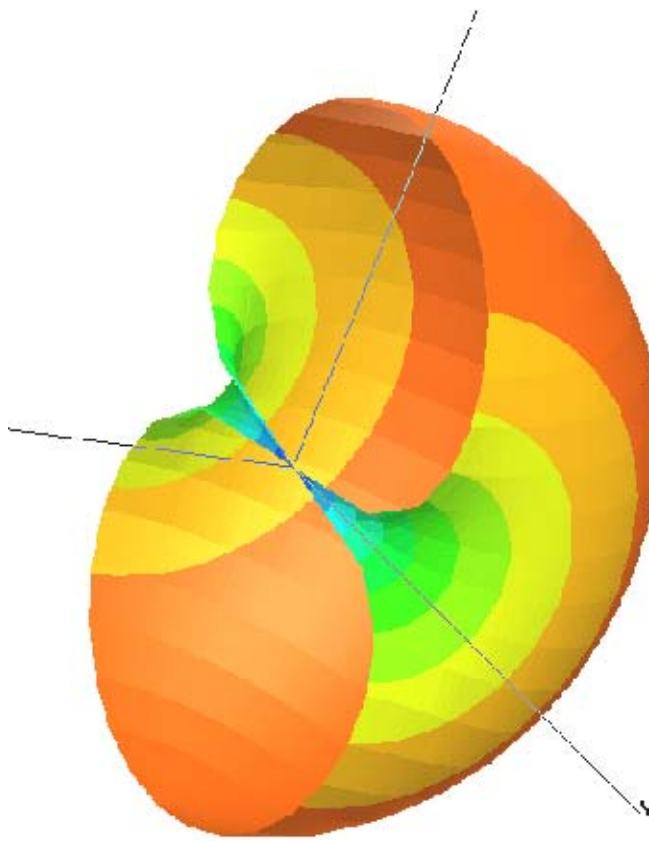
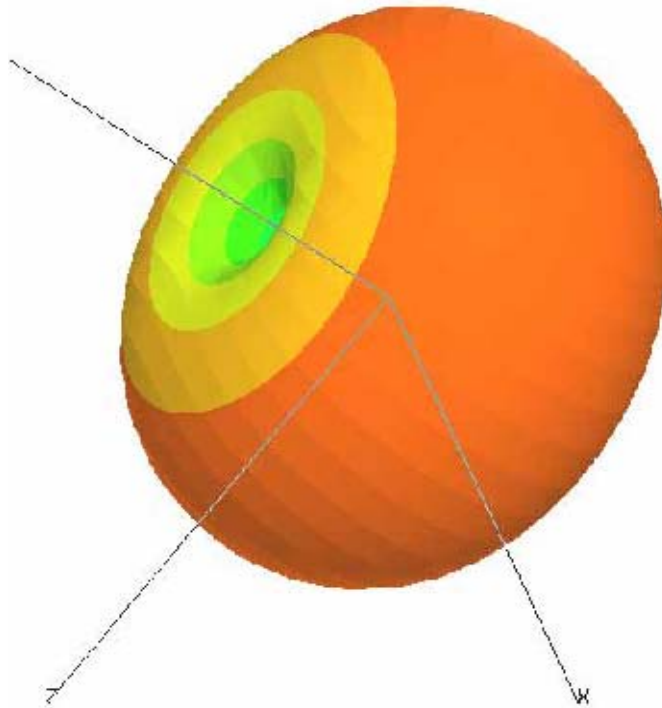


# Antenna Hinge is 180 degree

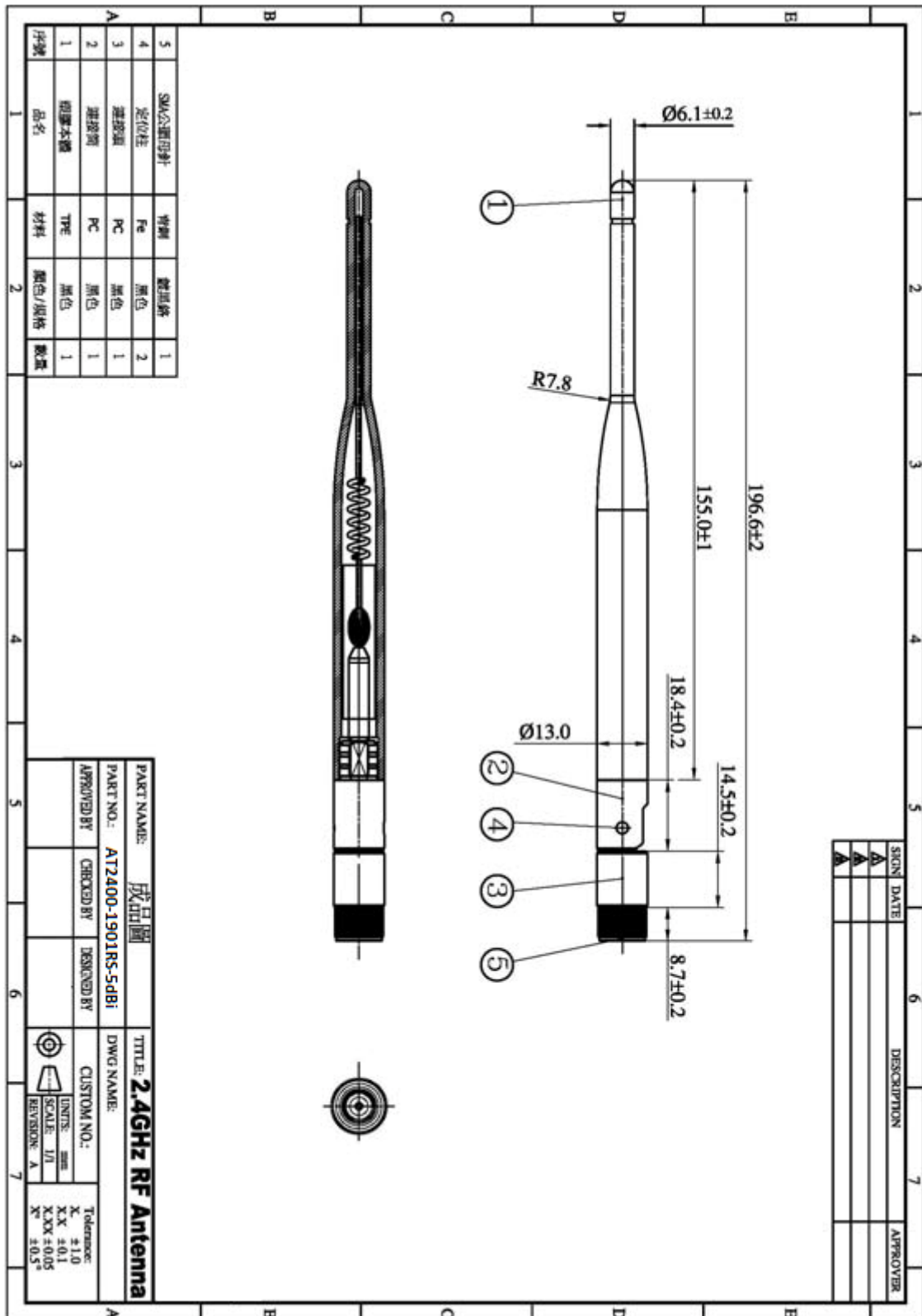


## 4. Antenna Radiation Pattern

### 3D Radiation Pattern



# 5. Mechanical Dimension Drawing



| SIGN | DATE | DESCRIPTION | APPROVER |
|------|------|-------------|----------|
| △    |      |             |          |
| △    |      |             |          |
| △    |      |             |          |

|                               |             |                                 |             |
|-------------------------------|-------------|---------------------------------|-------------|
| PART NAME: 戒指圈                |             | TITLE: <b>2.4GHz RF Antenna</b> |             |
| PART NO.: AT72400-1901R5-5DBI |             | DWG NAME:                       |             |
| APPROVED BY:                  | CHECKED BY: | DESIGNED BY:                    | CUSTOM NO.: |
|                               |             |                                 | UNITS: mm   |
|                               |             |                                 | SCALE: 1/1  |
|                               |             |                                 | REVISION: A |
|                               |             | Tolerance: ±1.0                 |             |
|                               |             | X.X ±0.1                        |             |
|                               |             | X.XX ±0.05                      |             |
|                               |             | X ±0.5                          |             |

| 序号 | 品名      | 材料   | 颜色/规格 | 数量 |
|----|---------|------|-------|----|
| 5  | SMA公头母针 | 铜制   | 镀黑漆   | 1  |
| 4  | 定位柱     | Fe   | 黑色    | 2  |
| 3  | 连接器     | PC   | 黑色    | 1  |
| 2  | 连接器     | PC   | 黑色    | 1  |
| 1  | 塑胶本體    | TPPE | 黑色    | 1  |